

STATE OF OKLAHOMA
DEPARTMENT OF TRANSPORTATION

PLAN OF PROPOSED
COUNTY BRIDGE
BRIDGE AND APPROACHES

McCURTAIN COUNTY

PROJECT NO. CIRB-145C(172)RB

JOB PIECE NO. 25468(04)

BRIDGE "A" LOCATION NO. 45E2080N4680006

EXISTING NBI NO. 01272; NEW NBI NO. 30282

LATITUDE 33°59'48"; LONGITUDE 94°42'42"

YANUBBEE CREEK

INDEX OF SHEETS

SHEET NO.	DESCRIPTION
1	TITLE SHEET
2	TYPICAL SECTION
3	SUMMARY OF PAY QUANTITIES AND GENERAL NOTES (BRIDGE)
4	SUMMARY OF PAY QUANTITIES AND GENERAL NOTES (ROADWAY)
5	SUMMARY OF PAY QUANTITIES AND GENERAL NOTES (TRAFFIC)
6	SUMMARIES SHEET
7	STORM WATER MANAGEMENT PLAN
8	EROSION CONTROL PLAN
9	SURVEY DATA SHEET
10-11	PLAN AND PROFILE SHEET (1) - (2)
12	GENERAL PLAN AND ELEVATION
13	SUBSTRUCTURE STAKING DIAGRAM
14	FOUNDATION SHEET
15-16	TRAFFIC CONTROL & CONSTRUCTION SEQUENCING (1) - (2)
17-18	SIGNING AND STRIPING SHEET (1) - (2)
19	APPROACH SLAB DETAILS
20	TRAFFIC CONTROL STANDARD DETAIL
21-26	CROSS SECTIONS

THE FOLLOWING STANDARD DRAWINGS WILL BE A PART OF THIS PROJECT:

BRIDGE	ROADWAY	TRAFFIC
CB32-C-SK0-ABUT-PC4-02E	SSS-1-1	PM3-1-02
CB32-C-SK0-XSECT-PC234-01E	TSC2-3-2	RSD1-1-00
CB32-C-SK0-LSECT-PCB-01E	TSR-2-0	SBS1-1-00
CB32-C-SK0-DKSLB-BLIST-01E	PSE-1-0	GMS1-1-00
CB32-C-SK0-DIA-END-PC234-01E	CET4S-3-2	SSP1-1-02
CB32-C-SK0-SPR-QUAN-PCB-1-01E	FPI-3-3	SSA1-1-00
CB32-C-SK0-PCB-IV-105-01E	FHTMPP-1-0	TCS1-1-01
CB32-C-SK0-30-DIA-INT-PCB-01E	MI-3-0	TCS2-1-00
CB32-C-SK0-30-BRG-PC4-01E	RDI-3-1	TCS4-1-01
CB26-32-C-SK0-WING-PC4-01E	DC-3-2	TCS5-1-00
CB26-32-C-SK0-ABUT-MISC-01E	RWF2-2-1	TCS7-1-02
CB26-32-C-I-SK0-30-PCB-DTL-1-01E	SUEL1-3-2	TCS9-1-01
CB26-32-C-I-SK0-30-PCB-DTL-2-01E	SUEL4-3-2	TCS13-1-00
CB26-32-C-I-SK0-30-GRAU-BC-00E		TCS14-1-00
TR3-2-01E		GET-2-00
HP1-2-00E		GRH1-1-00
		GRH2-1-00
		GRH3-1-00

- SURVEY DATA**
- HORIZONTAL CONTROL
 - HORIZONTAL CONTROL FOR THIS SURVEY IS THE ESTABLISHED SECTION CORNERS ALONG THE CONSTRUCTION REFERENCE LINE (CRL) & SECTION LINE.
 - VERTICAL CONTROL
 - LEVEL DATUM IS MEAN SEA LEVEL (U.S.C. & G.S.)

DESIGN DATA

ADT 2016	= 650
ADT 2036	= 1000
V	= 45 MPH
T	= 15%
FLEX. ESAL'S	= 4.4 M

SCALES

PLAN	1" = 50'
PROFILE HOR.	1" = 50'
VER.	1" = 5'
LAYOUT MAP	1" = 5280'

- CONVENTIONAL SIGNS**
- PROPOSED ROAD
 - RAILROADS
 - RANGE & TOWNSHIP
 - SECTION LINES
 - QUARTER SECTION LINES
 - FENCES
 - GROUND LINE
 - EXISTING ROADS
 - BASE LINE
 - GRADE LINES
 - TELEPHONE & TELEGRAPH
 - POWER LINES
 - BUILDINGS
 - OIL WELL
 - DRAINAGE STRUCTURES - IN PLACE
 - DRAINAGE STRUCTURES - NEW
 - RIGHT-OF-WAY LINES - EXISTING
 - RIGHT-OF-WAY LINES - NEW
 - CONTROLLED ACCESS
 - RIGHT-OF-WAY FENCE



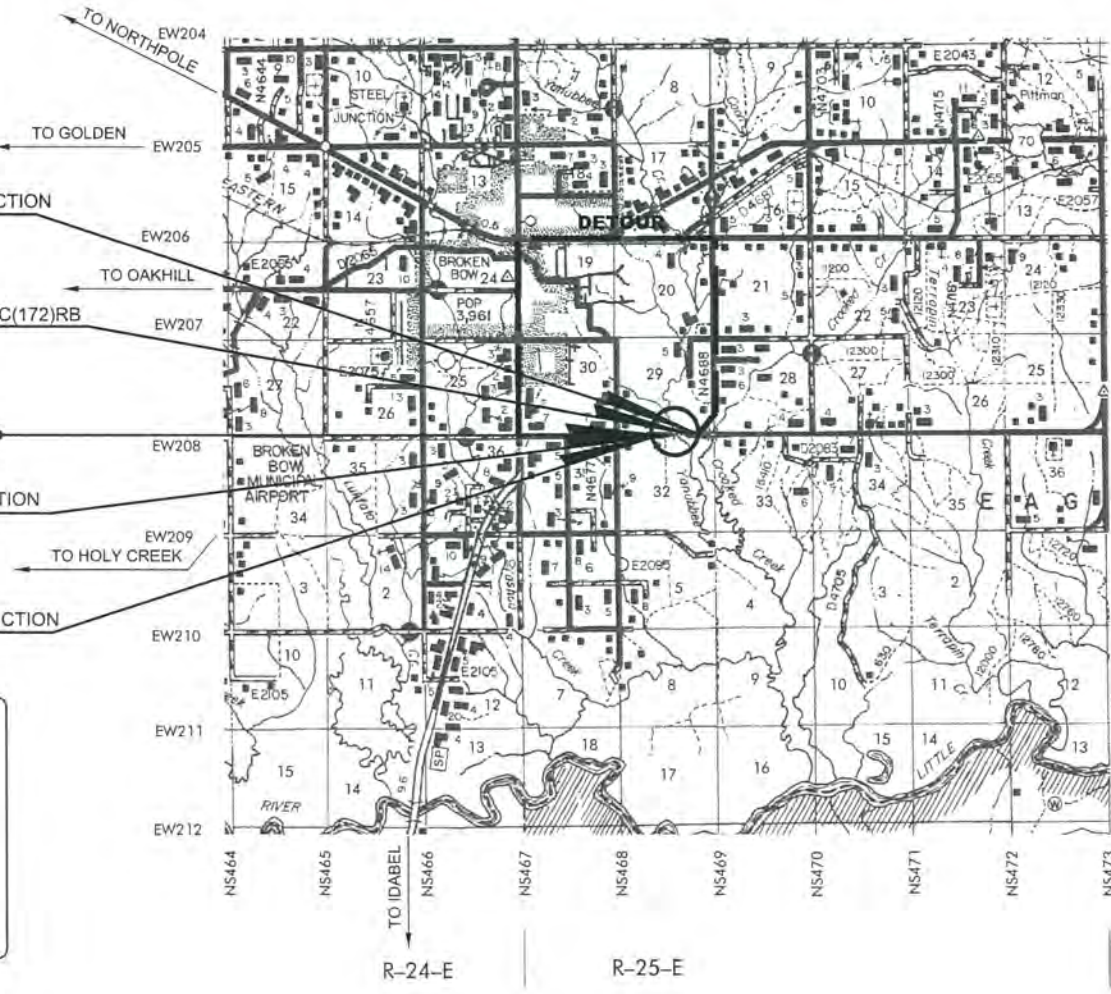
STA. 118+00.00 END INCIDENTAL CONSTRUCTION
PROJECT NO. CIRB-145C(172)RB

STA. 117+00.00 END PROJECT NO. CIRB-145C(172)RB
& BEGIN INCIDENTAL CONSTRUCTION

END BRIDGE STA. 107+53.59
BRIDGE LENGTH = 107.17'
BEGIN BRIDGE STA. 106+46.42

STA. 96+00.00 END INCIDENTAL CONSTRUCTION
& BEGIN PROJECT NO. CIRB-145C(172)RB

STA. 95+00.00 BEGIN INCIDENTAL CONSTRUCTION
PROJECT NO. CIRB-145C(172)RB



PROJECT LENGTH BASED ON C.R.L. STATIONING

ROADWAY LENGTH	1992.83 FT.	0.377 MI.
BRIDGE LENGTH	107.17 FT.	0.020 MI.
PROJECT LENGTH	2100.00 FT.	0.397 MI.
EXCEPTION	NONE	
EQUATION	NONE	

APPROVED:
BOARD OF COUNTY COMMISSIONERS

JIM FREENEY DISTRICT NO. 1

JOE COFFMAN DISTRICT NO. 2

JIMMY WESTBROOK DISTRICT NO. 3

KAREN CONAWAY COUNTY CLERK
DATE 12-19-16

Koneru Consulting Services, PLLC
SRIHARI KONERU, P.E.
DATE 12/15/2016

OKLAHOMA DEPARTMENT OF TRANSPORTATION

DATE APPROVED BY CHIEF ENGINEER

OKLAHOMA DEPARTMENT OF TRANSPORTATION FEDERAL HIGHWAY ADMINISTRATION

DATE APPROVED BY DIVISION ADMINISTRATOR

SWO PROJECT NO. CIRB-145C(172)RB SHEET NO. 1

12/16/2016 N:\A005 YANUBBEE CREEK\Drawings\ADD06-01-TITLE.dgn COUNTY COMMISSIONER JIM FREENEY, DISTRICT NO. 1 GREG MASSEY LOCAL GOVERNMENT DIVISION PE NO. 25468(04)

2009 OKLAHOMA STANDARD SPECIFICATIONS FOR HIGHWAY CONSTRUCTION-ENGLISH GOVERN, APPROVED BY THE U.S. DEPARTMENT OF TRANSPORTATION, FEDERAL HIGHWAY ADMINISTRATION, JANUARY 4, 2010.